



INDIAN SCHOOL AL WADI AL KABIR

Class: VII	Department: Social Science	Sub: Geography
Worksheet No: 2	Topic: Environment	Year: 2024-25

1	Choose the correct option: -				
1	World Environment Day is celebrated on a) 5 th June b) 31 st August c) 5 th July d) 2 nd October				
2	Name the domain which provides us forest, grasslands for grazing, land for agriculture and human settlement. a) Hydrosphere b) Lithosphere c) Atmosphere d) None of these				
3	Who interact with the environment and modify it according to their needs? a) Human beings b) Animals c) Rivers d) Mountains				
4	Which one of the following is an example for human-made environment? a) water b) land c) air d) parks				
II	Fill in the blanks: -				
5	<u>Atmosphere</u> is the layer of earth which surrounds with air.				
6	Landforms are found over the continents and also on <u>the ocean floors</u> .				
7	Atmosphere is hold by the <u>Gravitational</u> force.				
8	The French word Environner means <u>neighbourhood</u> .				
III	Answer in one or two sentences: -				
9	Name the four spheres of the earth. Lithosphere, Hydrosphere, Atmosphere and Biosphere.				
10	How atmosphere is important to us? Atmosphere protects us from the harmful rays and scorching heat of the sun.				
11	What is 'Barter System'? Barter system is the exchange of goods without the use of money.				
IV	Answer in detail: -				
12	Differentiate between the following <table border="1"><thead><tr><th>Biotic</th><th>Abiotic</th></tr></thead><tbody><tr><td><ul style="list-style-type: none">The world of living organisms is called biotic environment.Examples: Plants and animals.</td><td><ul style="list-style-type: none">The world of non-living elements is called abiotic environment.Example: Land.</td></tr></tbody></table>	Biotic	Abiotic	<ul style="list-style-type: none">The world of living organisms is called biotic environment.Examples: Plants and animals.	<ul style="list-style-type: none">The world of non-living elements is called abiotic environment.Example: Land.
Biotic	Abiotic				
<ul style="list-style-type: none">The world of living organisms is called biotic environment.Examples: Plants and animals.	<ul style="list-style-type: none">The world of non-living elements is called abiotic environment.Example: Land.				
13	Why do the animals and vegetation vary from place to place? Animals and vegetation vary from place to place because: - <ul style="list-style-type: none">They are dependent on their immediate surroundings.They depend on the environmental conditions like climate, soil, water etc.All of them are interdependent on each other.				
14	Give an account of the atmosphere. <ul style="list-style-type: none">The atmosphere is the thin layer of air that surrounds the earth.				

- The gravitational force of the earth holds the atmosphere around it.
- It protects us from the harmful rays and scorching heat of the sun.
- It consists of numerous gases, dust and water vapour.
- The changes in the atmosphere produce changes in the weather and climate.

V Case Study Based Questions: -

15 Land, water, air, plants and animals comprise the natural environment. Lithosphere is the solid crust or the hard top layer of the earth. It is made up of rocks and minerals and covered by a thin layer of soil. It is an irregular surface with various landforms such as mountains, plateaus, plains, valleys, etc. Landforms are found over the continents and also on the ocean floors. Lithosphere is the domain that provides us forests, grasslands for grazing, land for agriculture and human settlements. It is also a source of mineral wealth.

1. Which is the hard top layer of the earth?

Lithosphere.

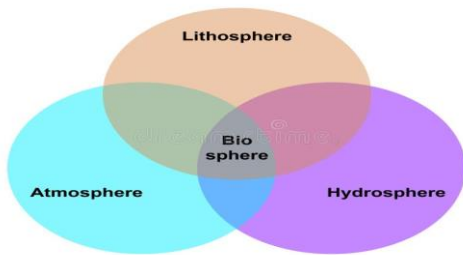
2. Where are the landforms found?

Landforms are found over the continents and also on the ocean floors

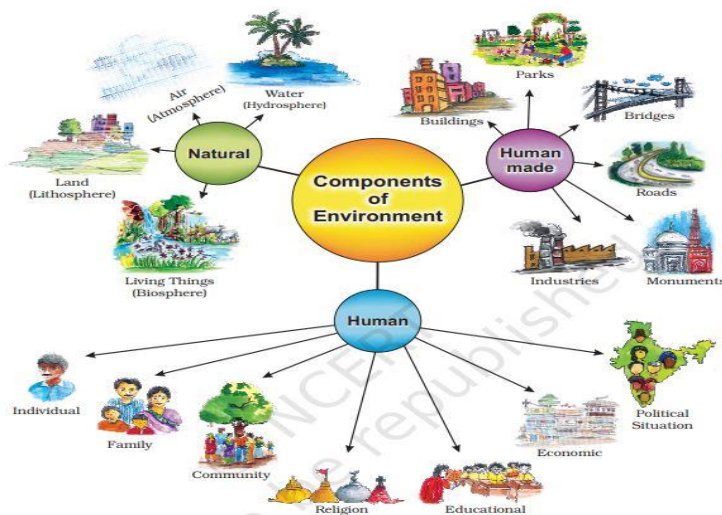
3. Lithosphere is made up of _____ -

Rocks and minerals and covered by a thin layer of soil.

16 Draw and label a diagram of the domains of Environment.



17 Observe the picture and answer the following questions: -



1. What comes under the Natural components of Environment?

Hydrosphere, Lithosphere, Atmosphere and Biosphere.

2. Monuments comes under _____ components of Environment

Human Made